



CABLE TRUNKING SYSTEM

TRUNKING

Kalister offers a comprehensive range of standard return flange surface trunking, and accessories, in single and multi-compartment.

Manufacturing Standard: BS EN 5008 - 1 (formerly BS 4678)

Material standard:

- Hot Dip Galvanized Sheet to BS EN 10142/3 Class 3.
- Stainless Steel S316

Standard Length: 2.44Mtr, and 3.00Mtr available upon request.

Cover Fixing is available in two different types:

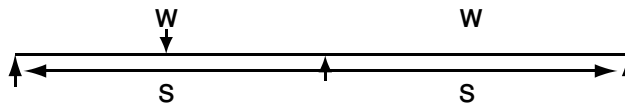
- Screw fix, using M5 blind rivets providing smooth edge to protect cables inside the trunking.
- Turnbuckle Fix (Quick Release Cam), using high tensile steel with aluminum cast bottoms, at intervals not exceeding 2 Mtrs.

Trunking Finish options, Kalister offers other alternative for material finish upon the client's request:

- Hot Dip Galvanized to BS EN 1461 (formerly BS 729).
- Electrostatic powder coated, with different standard RAL colors.
- Epoxy Painted.

Trunking Deflection Diagram :

The deflection shown in the tables includes the displacement due to the central point load "W" and the resulting from the self weight of the trunking

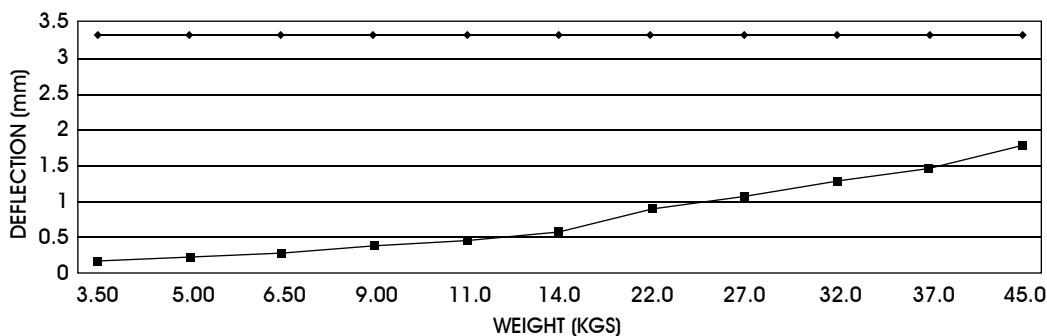


Span charts below assume the use of manufacturer's Stirrup Hangers.

Figures shown in column marked 1/450th span refer to an industry acceptable deflection and are produced as a guide only.

Span 1.5 Metre											
Weight Kgs	3.50	5.00	6.50	9.00	11.00	14.00	22.00	27.00	32.00	37.00	45.00
Trunking Deflection	0.17	0.23	0.29	0.39	0.46	0.58	0.89	1.08	1.27	1.47	1.77
1/450th Span	3.33	3.33	3.33	3.33	3.33	3.33	3.33	3.33	3.33	3.33	3.33

Trunking deflection at 1.5 Metre Span

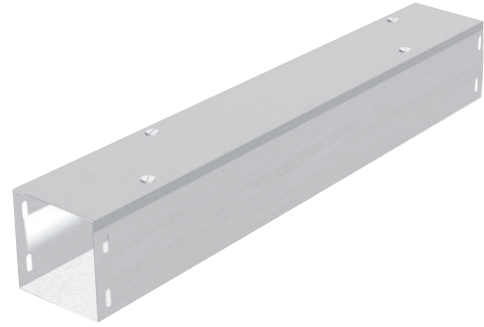


Single Compartment Trunking Screw Cover Type

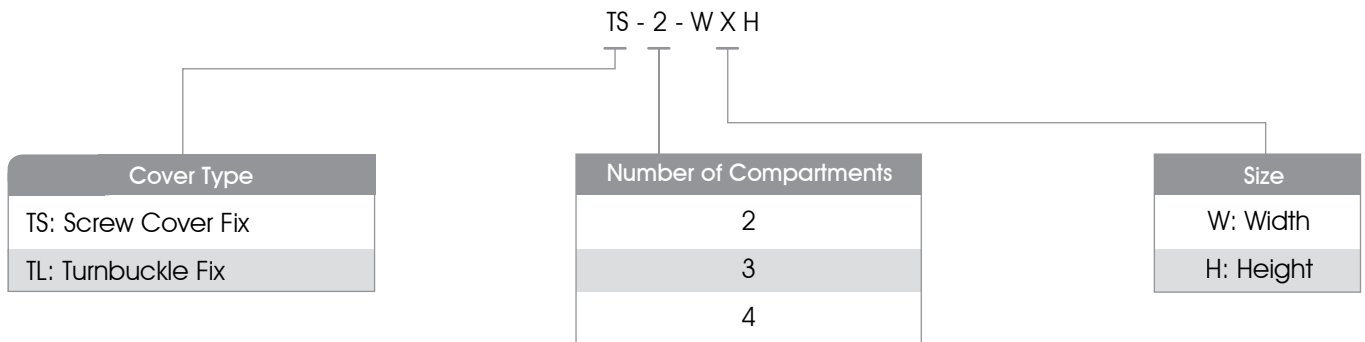


Part Number	Size WXH	
TS-1-5050	50	50
TS-1-7575	75	75
TS-1-10050	100	50
TS-1-10075	100	75
TS-1-100100	100	100
TS-1-15050	150	50
TS-1-15075	150	75
TS-1-150100	150	100
TS-1-150150	150	150
TS-1-20050	200	50
TS-1-20075	200	75
TS-1-200100	200	100
TS-1-200150	200	150
TS-1-200200	200	200
TS-1-25050	250	50
TS-1-25075	250	75
TS-1-250100	250	100
TS-1-250150	250	150
TS-1-250200	250	200
TS-1-250250	250	250
TS-1-30050	300	50
TS-1-30075	300	75
TS-1-300100	300	100
TS-1-300150	300	150
TS-1-300200	300	200
TS-1-300250	300	250
TS-1-300300	300	300

Single Compartment Trunking Turnbuckle Type



Part Number	Size WXH	
TL-1-5050	50	50
TL-1-7575	75	75
TL-1-10050	100	50
TL-1-10075	100	75
TL-1-100100	100	100
TL-1-15050	150	50
TL-1-15075	150	75
TL-1-150100	150	100
TL-1-150150	150	150
TL-1-20050	200	50
TL-1-20075	200	75
TL-1-200100	200	100
TL-1-200150	200	150
TL-1-200200	200	200
TL-1-25050	250	50
TL-1-25075	250	75
TL-1-250100	250	100
TL-1-250150	250	150
TL-1-250200	250	200
TL-1-250250	250	250
TL-1-30050	300	50
TL-1-30075	300	75
TL-1-300100	300	100
TL-1-300150	300	150
TL-1-300200	300	200
TL-1-300250	300	250
TL-1-300300	300	300



Trunking Capacity Guide (TCF):

$$TCF = (N \times CCF)$$

N : Number of cables

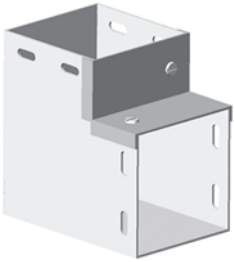
CCF : Common Cable factor

Multiply the number of cables of each size by the common factor for the size. Add the total result for all cables sizes. The total value must be equal or less the the Trunking Capacity Factor.

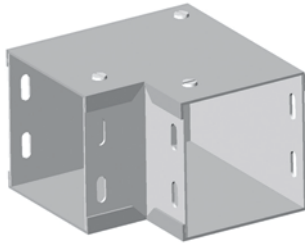
Cable Size (mm ²)	Common Cable Factor
1.5	8.6
2.5	12.6
4.0	16.6
6.0	21.2
10.0	35.3
16.0	47.8
25.0	73.9
35.0	93.3
50.0	128.7
70.0	167.4
95.0	229.7
120.0	227.6
150.0	343.1
240.0	552.0

Trunking Size (mm)	Trunking Capacity Factor
50 x 50	1037
75 x 50	1555
75 x 75	2371
100 x 50	2091
100 x 75	3189
100 x 100	4252
150 x 50	3091
150 x 75	4742
150 x 100	6394
150 x 150	9697
250 x 75	7114
250 x 100	9298
250 x 150	14652
250 x 250	21766
300 x 100	12788
300 x 150	19447
300 x 300	38000

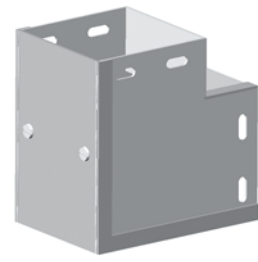
B90 Trunking Bend 90 Deg.



Inside Cover
Ordering No B90-I-WH



Top Side Cover
Ordering No B90-T-WH

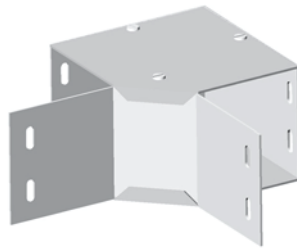


Outside Cover
Ordering No B90-O-WH

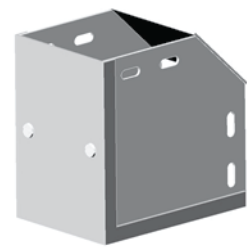
BG90 Trunking Bend 90 Deg Gusset Type



Inside Cover
Ordering No BG90-I-WH

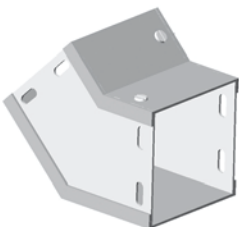


Top Side Cover
Ordering No BG90-T-WH

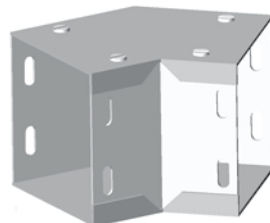


Outside Cover
Ordering No BG90-O-WH

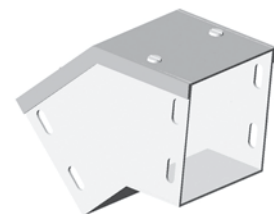
B45 Trunking Bend 45 Deg Gusset Type



Inside Cover
Ordering No B45-I-WH

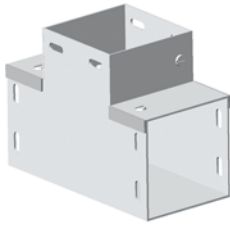


Top Side Cover
Ordering No B45-T-WH

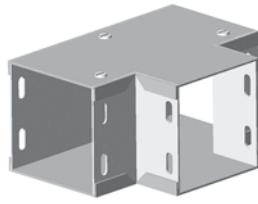


Outside Cover
Ordering No B45-O-WH

T Trunking TEE Normal Type



Inside Cover
Ordering No T-I-WH

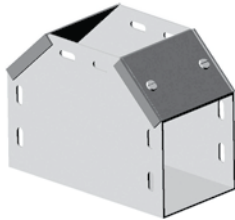


Top Side Cover
Ordering No T-T-WH

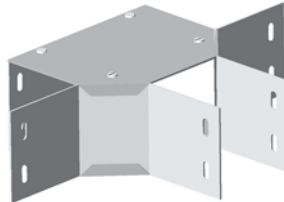


Outside Cover
Ordering No T-O-WH

TG Trunking TEE Gusset Type



Inside Cover
Ordering No TG-I-WH

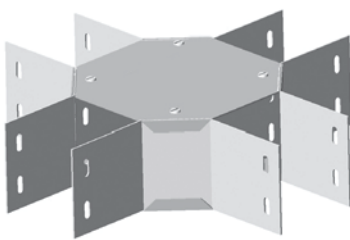


Top Side Cover
Ordering No TG-T-WH



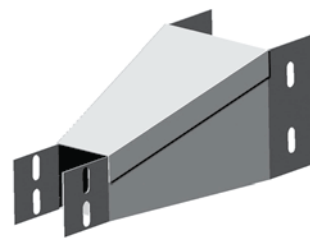
Outside Cover
Ordering No TG-O-WH

X Trunking Cross



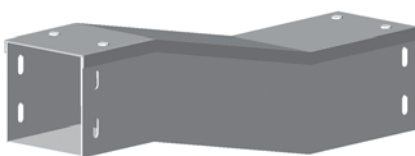
Ordering No X-WH

R Trunking Reducer



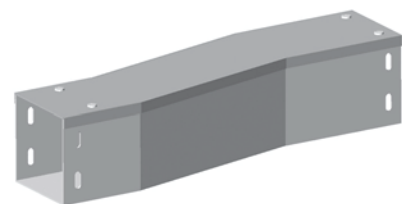
Ordering No R-W1H1-W2H2

OV Vertical Offset



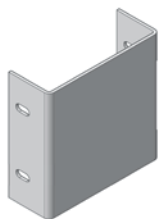
Trunking Vertical Offset
Ordering No OV-WH

OH Horizontal Offset



Trunking Horizontal Offset
Ordering No OH-WH

BE Block End



Ordering No BE-WH

HR Hanger



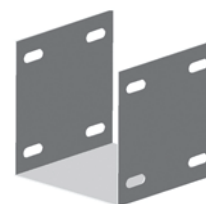
Ordering No HR-WH

SC Standard Connector



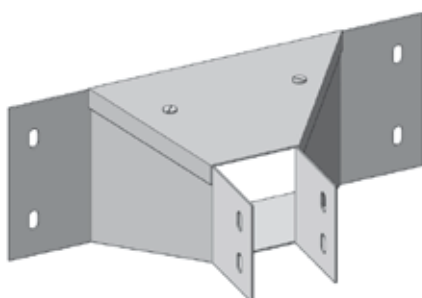
Ordering No SC-H

UC U-Type Connector



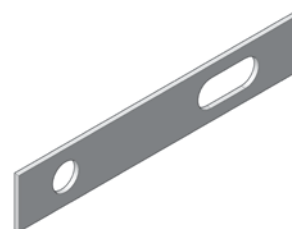
Ordering No UC-H

BM Bell Mouth



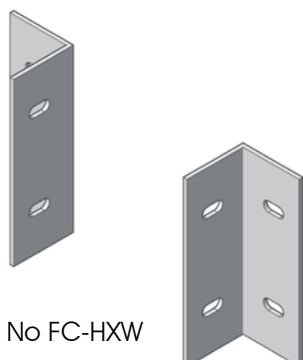
Ordering No BM-WH

TL Earth Continuity Strap



Ordering No TL

FC Flanged Connector



Ordering No FC-HXW

Trunking Minimum Thickness according to BS 4678

Trunking Size (mm)	Trunking Material Thickness (mm)
50 x 50	1.0
75 x 50	1.2
75 x 75	1.2
100 x 50	1.2
100 x 75	1.2
100 x 100	1.2
150 x 50	1.2
150 x 75	1.2
150 x 100	1.2
150 x 150	1.5
250 x 75	1.5
250 x 100	1.5
250 x 150	1.5
250 x 250	1.5
300 x 100	1.5
300 x 150	1.5
300 x 300	2.0

Note:

- Use M 6x12 Bolt To be ordered seperetly



Kalister

UK • INDIA • UAE • KUWAIT
www.kalistergroup.com